



RADIOLOGIC TECHNOLOGY BACHELOR OF SCIENCE

Imagine being a member of a coalition of researchers, educators, and practitioners from many professions who work together to improve human health. We transform students into highly skilled health care practitioners who advance the health and well-being of society. Through research, we discover, evaluate, and implement new knowledge to improve models and methods of practice in pharmacy and health sciences from the urban to global levels. Arrive at your health career destination by accepting our invitation to explore the programs of the Eugene Applebaum College of Pharmacy and Health Sciences.

imagine

WHAT DOES A RADIOLOGIC TECHNOLOGIST SCIENTIST DO?

Radiologic technologists are healthcare professionals who administer prescribed radiation to help diagnose medical conditions. They perform radiographic procedures, such as x-rays, CAT scans and MRI examinations. In their work, they use technologically advanced equipment to produce a variety of images of anatomical structures that can be evaluated by physicians.

For more information on a career in radiologic technology, contact:

- The American Society of Radiologic Technologists (ASRT)
www.asrt.org

WHY RADIOLOGIC TECHNOLOGY?

“The EACPHS BS in Radiologic Technology gives students the chance to experience everything from the newest cutting edge procedures to the most serious of traumatic injury and medical emergencies in a world renowned institution which is heavily involved in research and development.”

- JOHN DION
Radiologic Technologist

transform

WHY WAYNE STATE UNIVERSITY?

Wayne State University is a premier urban research institution offering more than 370 academic programs through 13 schools and colleges to nearly 28,000 graduate and undergraduate students. The University provides a multidisciplinary approach to research and education, and collaborates closely with government, industry and other institutions on a range of programs.

The Eugene Applebaum College of Pharmacy and Health Sciences (EACPHS) is located on one of the largest academic medical campuses in the United States and puts you in close proximity to the nation's leading health care educators. A degree from the College puts you in good company, with more than 12,000 EACPHS-educated health care professionals working in Michigan.

The Radiologic Technology program at Wayne State University is the only accredited bachelor's degree program in the field in Michigan. It provides both classroom learning and a full range of practical hands-on training experiences through its partnership with Henry Ford Hospital, a renowned level-one trauma center.

HOW DO I APPLY?

The application deadline is **November 30** of each year. The applicant must successfully complete the admission requirements, including an application for admission to WSU and the professional program application. Completion of admission requirements does not guarantee an interview or admission into the program.

arrive

ADMISSION REQUIREMENTS

- A minimum of 2.8 overall GPA, as well as a minimum 2.8 cumulative GPA in all science and non-science prerequisite coursework.
- All grades in prerequisite courses must be a minimum of a “C” or better (2.0 on a 4.0 scale).
- A minimum of 60 credit hours (can include equivalent pre-professional coursework taken at an accredited college or university).
- Completion of all prerequisite and university General Education coursework by the end of the winter semester, prior to beginning the professional program.

SCIENCE AND MATH PREREQUISITE COURSEWORK

BIO 1510 - Basic Life Mechanisms & Lab

BIO 2870 - Anatomy & Physiology & Lab

BIO 3200 - Human Physiology+

PHY 1020 - Conceptual Physics & Lab

MAT 1800 - Elementary Functions

Science requirements must have been taken within the past six years.

+ BIO 3200 must be completed by December of the application year.

NON-SCIENCE PREREQUISITE COURSEWORK

ENG 1020 - Introductory College Writing (BC)

ENG 3010 - Intermediate Writing (IC)

PHI 1050 - Critical Thinking Competency (CT)*

PHI 2320 - Ethics (PL)

COM 1010 - Oral Communication (OC)*

CSC 1000 - Introduction to Computer Science

PSY 1010 or 1020 - Introductory Psychology

PSY 2400 - Developmental Psychology

STA 1020 - Elementary Statistics

* Designate degree requirements that may be satisfied by coursework or examination. See www.testing.wayne.edu for further information.

Students who hold a previous bachelor's degree or who qualify under the university's MACRAO or MTA transfer policy (see www.transfercredit.wayne.edu) are exempt from completing the requirements listed below.

UNIVERSITY GENERAL EDUCATION REQUIREMENTS

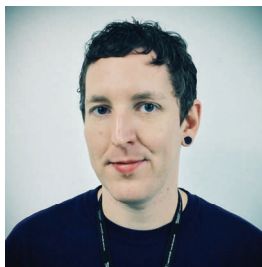
Historical Studies (HS)

Visual & Performing Arts (VP)

Social Science (SS)

Foreign Culture (FC)

American Society & Institutions (AI)



JOHN DION is an alumnus of the Radiologic Technology program working as a staff radiographer at the Henry Ford Hospital ER. He appreciates the well-rounded experience provided by his student experiences at Henry Ford, a level 1 trauma center. The program provided breadth and depth

during “many hours of practical real world experience” and he points out that students have the opportunity to advance certify in modalities such as mammography and computed tomography, a feature that many other RT programs do not have. Dion also learned flexibility, as the field is constantly evolving: “It demands an adaptable approach and it’s something you’ll be thankful for when you are a registered technologist in the real world.”

GENERAL DEADLINES FOR ADMISSION

PROGRAM APPLICATION DUE - November 30

For application information:

<http://cphs.wayne.edu/radiologic-technology/>

UNDERGRADUATE APPLICATION DUE - November 30

WSU Undergraduate Application:

<http://wayne.edu/admissions/>

Office of Admissions

Welcome Center

42 W. Warren

Detroit, MI 48202

877-WSU-INFO or 313-577-3577

Office of Student Financial Aid

313-577-2100

<http://wayne.edu/financial-aid/>

GENERAL INFORMATION

Eugene Applebaum College of Pharmacy and Health Sciences

Office of Student Affairs

259 Mack Avenue, Suite 1600

Detroit, MI 48201

313-577-1716

<http://cphs.wayne.edu/>

cphsinfo@wayne.edu